

Motherboard Driver Installation Instructions

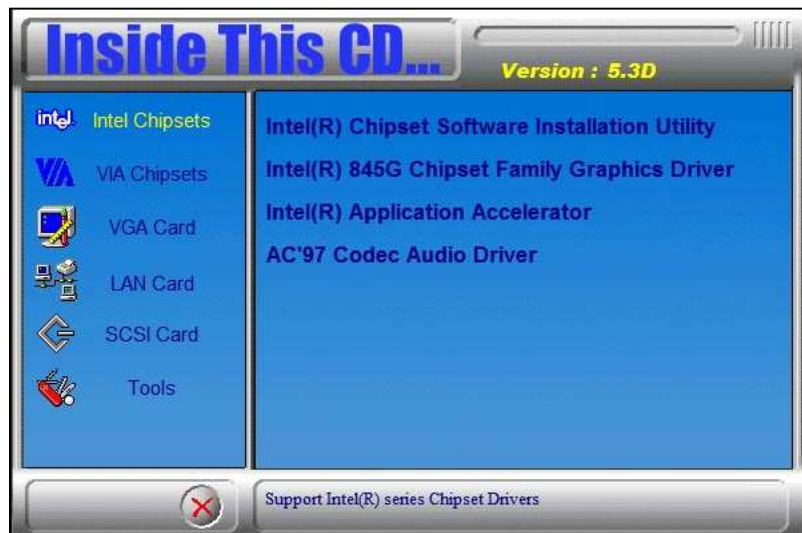
When you first put the CD in the drive, it should autostart and bring up a Menu.

On the left half of the screen click on "Intel Chipsets". The right side should populate as seen in this image.

Click on Intel 845G/GE/GL/GV as highlighted in the image.



This is the screen you should see now. On the right side start at the top and install each item, restart if instructed to do so. After a restart you will have to start over to get back to this screen.



After you've installed all 4 items in the list on the right above install the LAN drivers by clicking on "LAN Card" on the left hand side, then on the right side select the Intel Pro LAN Drivers as highlighted in this image.

